



Presslock

The deadlocking window lock



Presslock MC81: For use with most awning, casement, double hung and sliding timber windows.

Operation: Push to lock, key to unlock.

Application: Provides secure deadlocking for timber windows.

Components



Ferrule



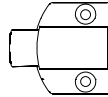
Ferrule Screws



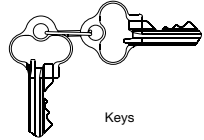
Timber Fixing Screws



One Way Security Screws



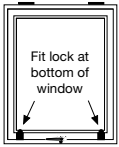
Lock Body



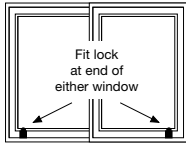
Keys

Fixing Instructions

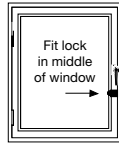
1



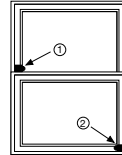
Awning Windows



Sliding Windows



Casement Windows



Double Hung Windows

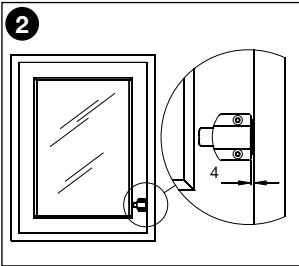
Option 1
With both windows sliding, fit to top of lower sash locking into upper sash

Option 2
With fixed top window, fit to lower sliding sash

Determine fixing location

Select mounting position, refer to diagrams above.

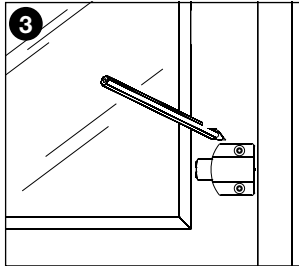
2



Check clearance

With window tightly closed and button unlocked, select a position clear of other hardware, allowing a minimum 3mm clear gap between lock body and sill or frame.

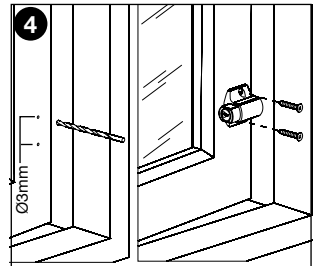
3



Mark drilling centres

Check clearance of screw with glass line. Position lock as required and mark drilling centres for fixing holes.

4



Drill holes and fit lock

Drill two 3mm pilot holes in sash to suit fixing screws and fix lock in place using standard timber fixing screws.

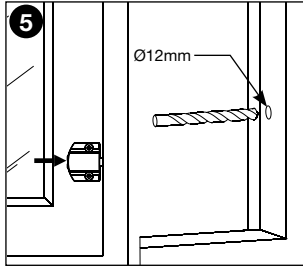


Drilling Holes Accurately - We recommend centre punching holes prior to drilling.



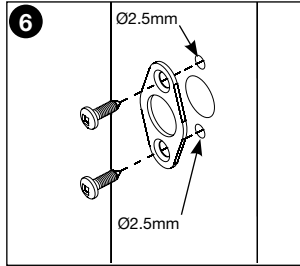
Presslock

The deadlocking window lock



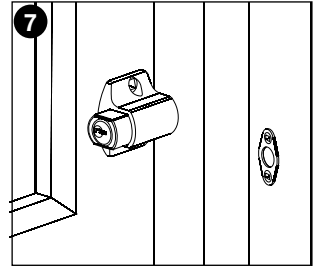
5 Mark and drill bolt hole

With window firmly closed, press lock button down until lock bolt marks centre position. Open window and drill a 12mm diameter hole where marked.



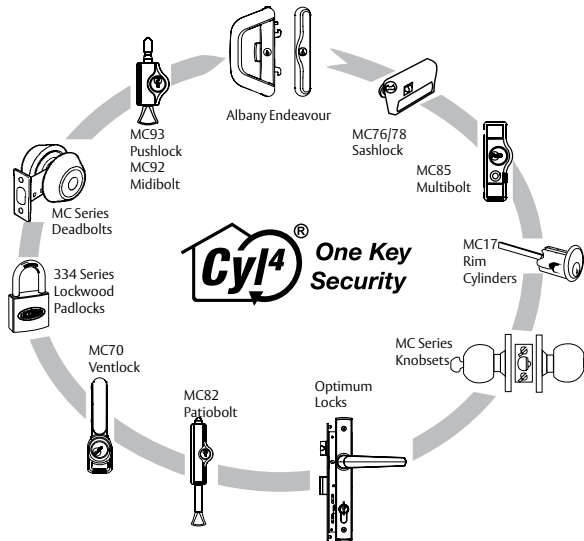
6 Fitting ferrule

Drill two 2.5mm pilot holes to suit ferrule screws and fix ferrule into place.



7 Check operation of lock

If satisfactory, replace standard screws with one way screws for greater security. **Note:** One way screws cannot be removed once tightened.



10 Year Warranty

The warranty covers manufacturing defects, standard finishes but excludes plated finishes or finishes exposed to a corrosive environment. The warranty excludes damage caused by installation contrary to written instructions and incidental or consequential damage. We recommend regular cleaning with mild detergent.



CYL4: With One Key Security you can use a single key to operate all the locks in your home. This lock can be supplied keyed alike in any quantity and keyed alike to a variety of ASSA ABLOY locks including most similar products of other makes. Get one key convenience simply by asking your retailer.

ASSA ABLOY New Zealand Limited
6 Armstrong Road, Albany
Auckland 0632, New Zealand
www.yalelock.co.nz

For customer feedback: info.nz@assaabloy.com



Patent: NZ 326495, AU 727454, GB 2325021